

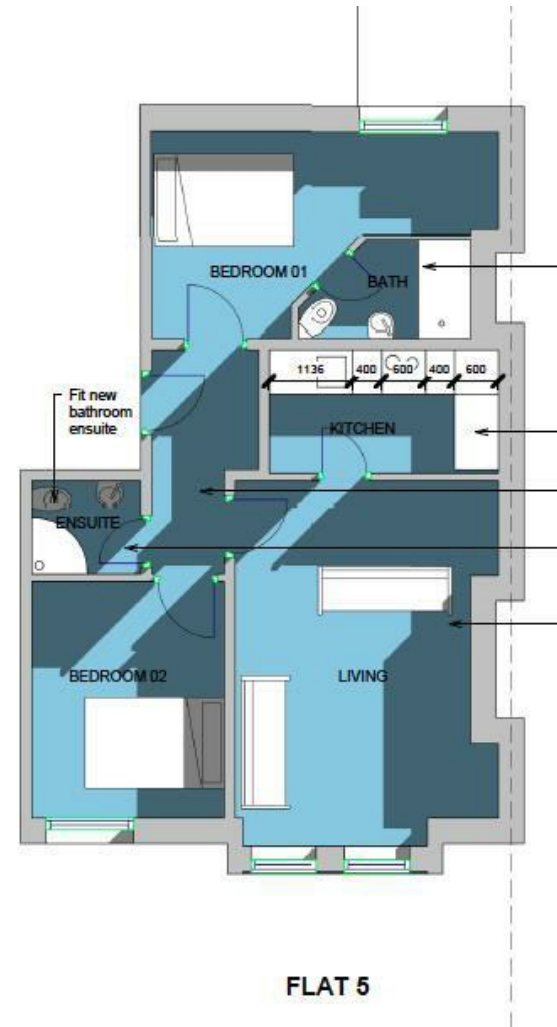


****AVAILABLE SEPTEMBER 2025****

****FURNISHED**** A modern two bedroom first floor conversion apartment, ideally located on Grosvenor Place, within a stone's throw of the amenities of Jesmond. A communal garden leads to the proud entrance with staircase to the second floor landing. The private accommodation briefly comprises entrance hall with secure entry phone, a large, airy open-plan lounge/kitchen with refitted kitchen and integrated appliances, two double bedrooms, one with ensuite and a separate refitted shower room. With laminate flooring, gas central heating and double glazing, this great space requires an early inspection.



Available 5th September 2025 | £1,100pcm |
Furnished | First Floor Apartment | Two Double
Bedrooms | En Suite Bathroom & Separate
Shower Room WC | Open Plan Lounge/ Kitchen
| Rear Yard | Off Street Parking | Students or
Professionals | Great Location | DG & GCH |
EPC Rating: C



£1,100 PCM

IMPORTANT NOTE: These particulars and the descriptions and measurements herein do not constitute representation and whilst every effort has been made to ensure accuracy, this cannot be guaranteed.

